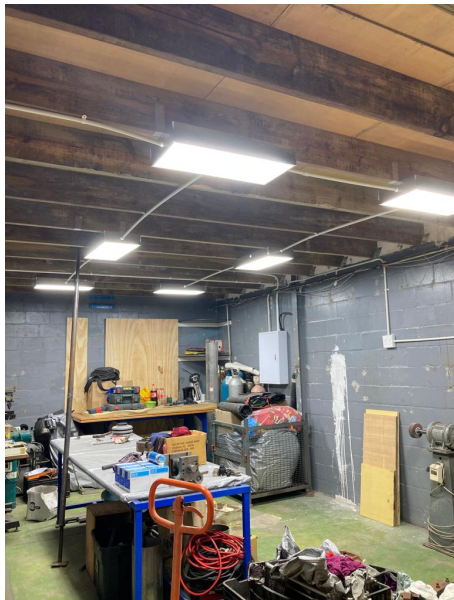




## TP.100W.5K: Titan +



## SPECIFICATIONS

Luminaire Colour Matte White  
Dimensions 680mm (W) x 300mm (L) x 95mm (D)  
Installation Type  
Ingress Protection 20  
Material Galvanized Steel  
Light Source 3 x 560mm SMD LED 5,000K 101.7W 16,740 Lumens  
Power Supply 220-240V 50-60Hz

## PRODUCT CODES

**TP.100W.5K**

100W



**ARC Lighting CC**

12 Goud Crescent, Brackenfell Industrial, Cape Town, 7560, South Africa

Tel: +27 (0)21 981 0539 | Fax: +27 (0)21 981 1092

sales@arclighting.co.za | www.arclighting.co.za