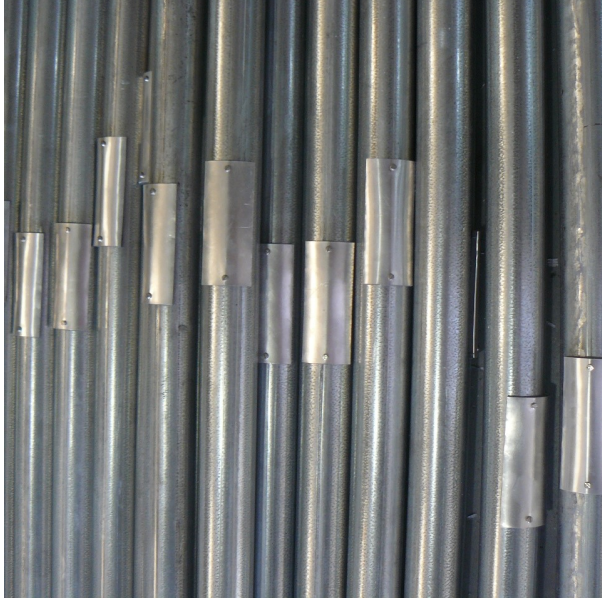




GPOLE: Galvanized Pole



SPECIFICATIONS

Luminaire Colour Hot Dip Galvanized
Dimensions 76mm (D) x Xm Long Pole
Installation Type
Ingress Protection
Material Mild-Steel
Light Source N/A
Power Supply

PRODUCT CODES

GPOLE

Custom Length Hot Dip Galvanized Pole

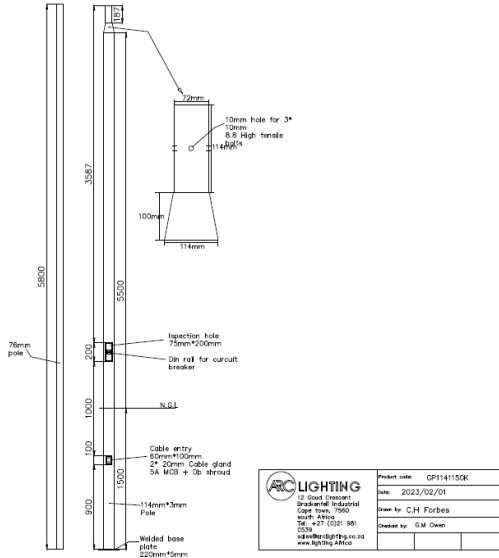


ARC Lighting CC

12 Goud Crescent, Brackenfell Industrial, Cape Town, 7560, South Africa
Tel: +27 (0)21 981 0539 | Fax: +27 (0)21 981 1092
sales@arclighting.co.za | www.arclighting.co.za



GP1141150: 11.5m Street Light Pole



SPECIFICATIONS

- Luminaire Colour Galvanized, Matte Black, Matte White or Grey
- Dimensions 114mm (D) x 5.7m (L) & 76mm (D) x 5.8m (L)
- Installation Type
- Ingress Protection N/A
- Material Mild-Steel
- Light Source N/A
- Power Supply N/A

PRODUCT CODES

GP114950	9.5 Meters (8m above ground)
GP1141150	11.5 Meters (10m above ground)

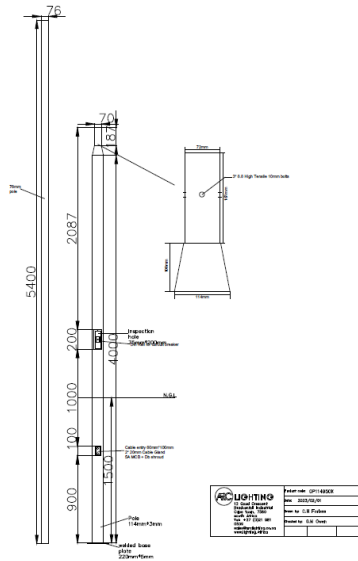


ARC Lighting CC

12 Goud Crescent, Brackenfell Industrial, Cape Town, 7560, South Africa
Tel: +27 (0)21 981 0539 | Fax: +27 (0)21 981 1092
sales@arclighting.co.za | www.arclighting.co.za



GP114950: 9.5m Street Light Pole



SPECIFICATIONS

Luminaire Colour Galvanized, Matte Black, Matte White or Grey
 Dimensions 114mm (D) x 4.2m (L) & 76mm (D) x 5.4m (L)
 Installation Type
 Ingress Protection N/A
 Material Mild-Steel
 Light Source N/A
 Power Supply N/A

PRODUCT CODES

GP114950	9.5 Meters (8m above ground)
GP1141150	11.5 Meters (10m above ground)



ARC Lighting CC

12 Goud Crescent, Brackenfell Industrial, Cape Town, 7560, South Africa
 Tel: +27 (0)21 981 0539 | Fax: +27 (0)21 981 1092
 sales@arclighting.co.za | www.arclighting.co.za