

## FLS11: Up/Down Fluorescent Cage Fitting



### SPECIFICATIONS

Luminaire Colour RN Silver  
Dimensions 1200mm (L)  
Installation Type  
Ingress Protection 20  
Material Aluminium & Steel  
Light Source 2x 36w  
Power Supply 220-240V 50-60Hz

### PRODUCT CODES

**FLS11**

RN Silver

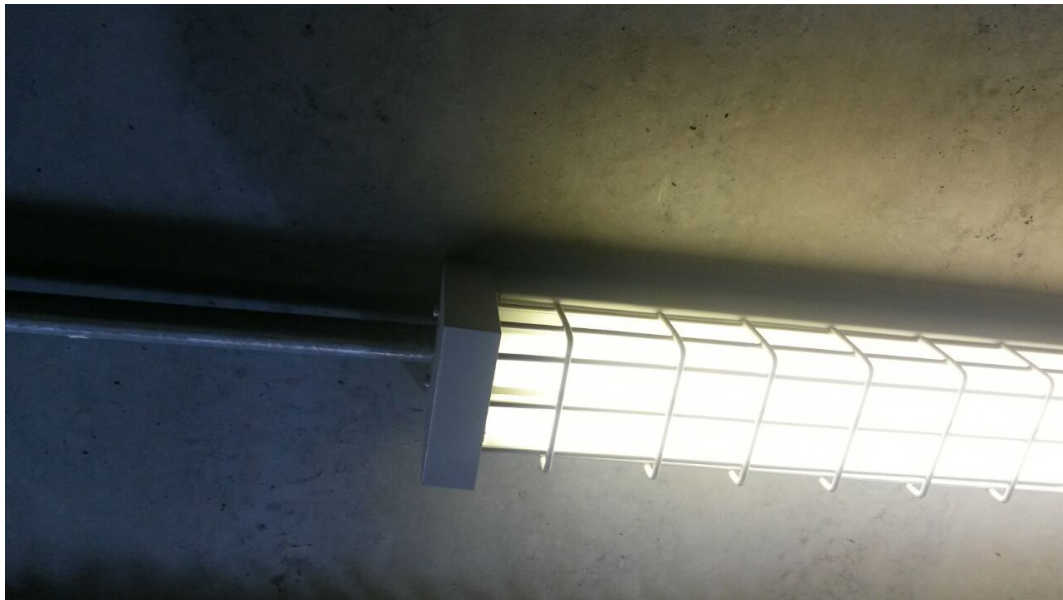


**ARC Lighting CC**

12 Goud Crescent, Brackenfell Industrial, Cape Town, 7560, South Africa  
Tel: +27 (0)21 981 0539 | Fax: +27 (0)21 981 1092  
sales@arclighting.co.za | www.arclighting.co.za



## FLS12: Fluorescent Cage Fitting (Down Only)



### SPECIFICATIONS

Luminaire Colour RN Silver  
Dimensions 1200mm (L)  
Installation Type  
Ingress Protection 20  
Material Aluminium & Steel  
Light Source 2x 36w  
Power Supply 220-240V 50-60Hz

### PRODUCT CODES

**FLS12**

RN Silver



**ARC Lighting CC**

12 Goud Crescent, Brackenfell Industrial, Cape Town, 7560, South Africa

Tel: +27 (0)21 981 0539 | Fax: +27 (0)21 981 1092

sales@arclighting.co.za | www.arclighting.co.za



## FLS15: Allegra Fluorescent Fitting



### SPECIFICATIONS

Luminaire Colour RN Silver  
Dimensions 1200mm (L)  
Installation Type  
Ingress Protection 20  
Material Aluminium  
Light Source 2x 54w  
Power Supply 220-240V 50-60Hz

### PRODUCT CODES

**FLS15**

RN Silver



**ARC Lighting CC**

12 Goud Crescent, Brackenfell Industrial, Cape Town, 7560, South Africa

Tel: +27 (0)21 981 0539 | Fax: +27 (0)21 981 1092

sales@arclighting.co.za | www.arclighting.co.za



## FLS20: Open Channel LED Fluorescent



### SPECIFICATIONS

Luminaire Colour Matte White  
Dimensions 1200mm (L)  
Installation Type  
Ingress Protection 20  
Material Aluminium  
Light Source 3x LED  
Power Supply 220-240V 50-60Hz

### PRODUCT CODES

**FLS20**

Matte White



**ARC Lighting CC**

12 Goud Crescent, Brackenfell Industrial, Cape Town, 7560, South Africa  
Tel: +27 (0)21 981 0539 | Fax: +27 (0)21 981 1092  
sales@arclighting.co.za | www.arclighting.co.za