

## BRCKT001: Custom Bracket



## SPECIFICATIONS

Luminaire Colour Raw  
Dimensions 76mm (D)  
Installation Type  
Ingress Protection  
Material Galvanized Mild-Steel  
Light Source N/A  
Power Supply

## PRODUCT CODES

**BRCKT001**

Raw



**ARC Lighting CC**

12 Goud Crescent, Brackenfell Industrial, Cape Town, 7560, South Africa  
Tel: +27 (0)21 981 0539 | Fax: +27 (0)21 981 1092  
sales@arclighting.co.za | www.arclighting.co.za

## PCHAIN: Pendant Chain



## SPECIFICATIONS

Luminaire Colour Matte Black  
 Dimensions 3.5mm Thick x 35mm (L)  
 Installation Type  
 Ingress Protection  
 Material Aluminium  
 Light Source N/A  
 Power Supply

## PRODUCT CODES

|                  |               |
|------------------|---------------|
| <b>PCHAINAB</b>  | Antique Brass |
| <b>PCHAINB</b>   | Brass         |
| <b>PCHAINSC</b>  | Shiny Chrome  |
| <b>PCHAINSAC</b> | Satin Chrome  |
| <b>PCHAINW</b>   | Matte White   |
| <b>PCHAINK</b>   | Matte Black   |
| <b>PCHAINKB</b>  | Black Bronze  |



**ARC Lighting CC**

12 Goud Crescent, Brackenfell Industrial, Cape Town, 7560, South Africa  
 Tel: +27 (0)21 981 0539 | Fax: +27 (0)21 981 1092  
[sales@arclighting.co.za](mailto:sales@arclighting.co.za) | [www.arclighting.co.za](http://www.arclighting.co.za)



## GN001: Intercom Gooseneck



### SPECIFICATIONS

Luminaire Colour Matte Black  
Dimensions Base Plate (4.5mm): 200mm x 200mm, Vertical Pipe (50mm): 1000mm, Overhang: 300mm, Intercom Plate  
Installation Type  
Ingress Protection  
Material Stainless Steel  
Light Source N/A  
Power Supply

### PRODUCT CODES

**GN001**

Matte Black



**ARC Lighting CC**

12 Goud Crescent, Brackenfell Industrial, Cape Town, 7560, South Africa  
Tel: +27 (0)21 981 0539 | Fax: +27 (0)21 981 1092  
sales@arclighting.co.za | www.arclighting.co.za



## COM008: Swivel Knuckle



## SPECIFICATIONS

Luminaire Colour Shiny Chrome  
Dimensions 180° Degree Swivel  
Installation Type  
Ingress Protection  
Material Stainless Steel  
Light Source N/A  
Power Supply

## PRODUCT CODES

**COM008**

Shiny Chrome Swivel Knuckle / Matte Black Swivel Knuckle / Matte White Swivel Knuckle



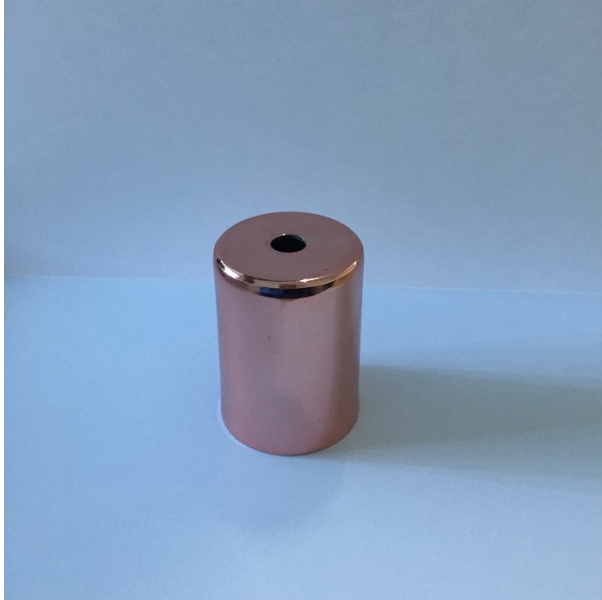
**ARC Lighting CC**

12 Goud Crescent, Brackenfell Industrial, Cape Town, 7560, South Africa

Tel: +27 (0)21 981 0539 | Fax: +27 (0)21 981 1092

sales@arclighting.co.za | www.arclighting.co.za

## SLEEVE: Aluminium Sleeve



## SPECIFICATIONS

Luminaire Colour Shiny Copper  
Dimensions 42mm Internal (D) x 60mm (L)  
Installation Type  
Ingress Protection  
Material Aluminium  
Light Source N/A  
Power Supply

## PRODUCT CODES

**SLEEVE**

Shiny Copper



**ARC Lighting CC**

12 Goud Crescent, Brackenfell Industrial, Cape Town, 7560, South Africa  
Tel: +27 (0)21 981 0539 | Fax: +27 (0)21 981 1092  
sales@arclighting.co.za | www.arclighting.co.za

## COM013: E27 Lampholder



### SPECIFICATIONS

Luminaire Colour Matte Black  
Dimensions  
Installation Type  
Ingress Protection  
Material Plastic  
Light Source E27  
Power Supply

### PRODUCT CODES

|               |                               |
|---------------|-------------------------------|
| <b>COM013</b> | Smooth E27 Lampholder         |
| <b>COM014</b> | Threaded E27 Lampholder       |
| <b>COM015</b> | Fully Threaded E27 Lampholder |
| <b>COM016</b> | E27 Lampholder Shade Ring     |
| <b>COM017</b> | E27 Cover Cap                 |



**ARC Lighting CC**

12 Goud Crescent, Brackenfell Industrial, Cape Town, 7560, South Africa  
Tel: +27 (0)21 981 0539 | Fax: +27 (0)21 981 1092  
sales@arclighting.co.za | www.arclighting.co.za

## CORDGRIP: Cordgrip



## SPECIFICATIONS

Luminaire Colour Matte Black or Matte White

Dimensions

Installation Type

Ingress Protection

Material Plastic

Light Source

Power Supply

## PRODUCT CODES

**CORDGRIP**

Matte Black or Matte White



**ARC Lighting CC**

12 Goud Crescent, Brackenfell Industrial, Cape Town, 7560, South Africa

Tel: +27 (0)21 981 0539 | Fax: +27 (0)21 981 1092

sales@arclighting.co.za | www.arclighting.co.za

## COM016: E27 Lamholder Shade Ring



### SPECIFICATIONS

Luminaire Colour Matte Black or Matte White  
 Dimensions  
 Installation Type  
 Ingress Protection  
 Material Plastic  
 Light Source E27  
 Power Supply

### PRODUCT CODES

|               |                               |
|---------------|-------------------------------|
| <b>COM013</b> | Smooth E27 Lampholder         |
| <b>COM014</b> | Threaded E27 Lampholder       |
| <b>COM015</b> | Fully Threaded E27 Lampholder |
| <b>COM016</b> | E27 Lampholder Shade Ring     |
| <b>COM017</b> | E27 Cover Cap                 |



**ARC Lighting CC**

12 Goud Crescent, Brackenfell Industrial, Cape Town, 7560, South Africa  
 Tel: +27 (0)21 981 0539 | Fax: +27 (0)21 981 1092  
[sales@arclighting.co.za](mailto:sales@arclighting.co.za) | [www.arclighting.co.za](http://www.arclighting.co.za)



## COM001: 10mm Lock Nut



### SPECIFICATIONS

Luminaire Colour Raw  
 Dimensions 10mm (D)  
 Installation Type  
 Ingress Protection  
 Material Electro Galvanised Steel  
 Light Source  
 Power Supply

### PRODUCT CODES

|        |                         |
|--------|-------------------------|
| COM001 | 10mm Lock Nut           |
| COM002 | 10mm X 15mm (L) Nipple  |
| COM003 | 10mm X 20mm (L) Nipple  |
| COM004 | 10mm X 25mm (L) Nipple  |
| COM018 | 10mm X 30mm (L) Nipple  |
| COM026 | 10mm X 55mm (L) Nipple  |
| COM020 | 10mm X 100mm (L) Nipple |
| COM021 | 10mm X 110mm (L) Nipple |
| COM022 | 10mm X 115mm (L) Nipple |
| COM023 | 10mm X 120mm (L) Nipple |
| COM024 | 10mm X 130mm (L) Nipple |
| COM025 | 10mm Washer             |

**ARC Lighting CC**

12 Goud Crescent, Brackenfell Industrial, Cape Town, 7560, South Africa

Tel: +27 (0)21 981 0539 | Fax: +27 (0)21 981 1092

sales@arclighting.co.za | www.arclighting.co.za

## COM002: 10mm Nipple



## SPECIFICATIONS

Luminaire Colour Raw  
 Dimensions 10mm Thread x 15mm/20mm/25mm/30mm (L)  
 Installation Type  
 Ingress Protection  
 Material Mild-Steel  
 Light Source  
 Power Supply

## PRODUCT CODES

|        |                         |
|--------|-------------------------|
| COM002 | 10mm X 15mm (L) Nipple  |
| COM003 | 10mm X 20mm (L) Nipple  |
| COM004 | 10mm X 25mm (L) Nipple  |
| COM018 | 10mm X 30mm (L) Nipple  |
| COM026 | 10mm X 55mm (L) Nipple  |
| COM020 | 10mm X 100mm (L) Nipple |
| COM027 | 10mm X 110mm (L) Nipple |
| COM028 | 10mm X 115mm (L) Nipple |
| COM029 | 10mm X 120mm (L) Nipple |
| COM030 | 10mm X 130mm (L) Nipple |

**ARC Lighting CC**

12 Goud Crescent, Brackenfell Industrial, Cape Town, 7560, South Africa

Tel: +27 (0)21 981 0539 | Fax: +27 (0)21 981 1092

sales@arclighting.co.za | www.arclighting.co.za

## COM014: Threaded E27 Lampholder



### SPECIFICATIONS

Luminaire Colour Matte Black or Matte White  
 Dimensions 40mm (D) x 60mm (H)  
 Installation Type  
 Ingress Protection  
 Material Plastic  
 Light Source E27  
 Power Supply

### PRODUCT CODES

|               |                               |
|---------------|-------------------------------|
| <b>COM013</b> | Smooth E27 Lampholder         |
| <b>COM014</b> | Threaded E27 Lampholder       |
| <b>COM015</b> | Fully Threaded E27 Lampholder |
| <b>COM016</b> | E27 Lampholder Shade Ring     |
| <b>COM017</b> | E27 Cover Cap                 |



**ARC Lighting CC**

12 Goud Crescent, Brackenfell Industrial, Cape Town, 7560, South Africa  
 Tel: +27 (0)21 981 0539 | Fax: +27 (0)21 981 1092  
 sales@arclighting.co.za | www.arclighting.co.za

## COM015: Fully Threaded E27 Lampholder



### SPECIFICATIONS

Luminaire Colour Matte Black or Matte White  
Dimensions 40mm (D) x 60mm (H)  
Installation Type  
Ingress Protection  
Material Plastic  
Light Source E27  
Power Supply

### PRODUCT CODES

|               |                               |
|---------------|-------------------------------|
| <b>COM013</b> | Smooth E27 Lampholder         |
| <b>COM014</b> | Threaded E27 Lampholder       |
| <b>COM015</b> | Fully Threaded E27 Lampholder |
| <b>COM016</b> | E27 Lampholder Shade Ring     |
| <b>COM017</b> | E27 Cover Cap                 |



**ARC Lighting CC**

12 Goud Crescent, Brackenfell Industrial, Cape Town, 7560, South Africa  
Tel: +27 (0)21 981 0539 | Fax: +27 (0)21 981 1092  
sales@arclighting.co.za | www.arclighting.co.za

## COM029: Smooth E14 Lampholder



### SPECIFICATIONS

Luminaire Colour Matte Black or Matte White  
Dimensions 28mm (D) x 58mm (H)  
Installation Type  
Ingress Protection  
Material Plastic  
Light Source E14  
Power Supply

### PRODUCT CODES

|               |                               |
|---------------|-------------------------------|
| <b>COM029</b> | E14 Smooth Lampholder         |
| <b>COM035</b> | E14 Cap                       |
| <b>COM036</b> | E14 Fully Threaded Lampholder |
| <b>COM037</b> | E14 Shade Ring                |



**ARC Lighting CC**

12 Goud Crescent, Brackenfell Industrial, Cape Town, 7560, South Africa  
Tel: +27 (0)21 981 0539 | Fax: +27 (0)21 981 1092  
sales@arclighting.co.za | www.arclighting.co.za

## COM033: Strain Relief Hook



## SPECIFICATIONS

Luminaire Colour Shiny Chrome  
Dimensions 50mm (D) x 35mm (L) Hook  
Installation Type  
Ingress Protection  
Material Aluminium  
Light Source  
Power Supply

## PRODUCT CODES

**COM033**

Strain Relief Hook for Pendant - Shiny Chrome

**COM034**

Ceiling Hook for Spider Pendant - Matte Black / Matte White



**ARC Lighting CC**

12 Goud Crescent, Brackenfell Industrial, Cape Town, 7560, South Africa

Tel: +27 (0)21 981 0539 | Fax: +27 (0)21 981 1092

sales@arclighting.co.za | www.arclighting.co.za

## COM034: Ceiling Hook



## SPECIFICATIONS

Luminaire Colour Raw  
Dimensions 45mm (D) x 25mm (L) Hook  
Installation Type  
Ingress Protection  
Material Mild-Steel  
Light Source  
Power Supply

## PRODUCT CODES

**COM033**

Strain Relief Hook for Pendant - Shiny Chrome

**COM034**

Ceiling Hook for Spider Pendant - Matte Black / Matte White



**ARC Lighting CC**

12 Goud Crescent, Brackenfell Industrial, Cape Town, 7560, South Africa

Tel: +27 (0)21 981 0539 | Fax: +27 (0)21 981 1092

sales@arclighting.co.za | www.arclighting.co.za

## ROD01: 12mm Round Tubing



### SPECIFICATIONS

Luminaire Colour Brushed Aluminium  
 Dimensions 12.7mm (D) x 1.6mm Thick  
 Installation Type  
 Ingress Protection  
 Material Aluminium  
 Light Source  
 Power Supply

### PRODUCT CODES

|              |                 |
|--------------|-----------------|
| <b>ROD01</b> | 10mm - 599mm    |
| <b>ROD02</b> | 600mm - 999mm   |
| <b>ROD03</b> | 1000mm - 1999mm |
| <b>ROD04</b> | 2000mm - 2999mm |
| <b>ROD05</b> | 3000mm - 3999mm |
| <b>ROD06</b> | 4000mm - 5000mm |



**ARC Lighting CC**

12 Goud Crescent, Brackenfell Industrial, Cape Town, 7560, South Africa  
 Tel: +27 (0)21 981 0539 | Fax: +27 (0)21 981 1092  
[sales@arclighting.co.za](mailto:sales@arclighting.co.za) | [www.arclighting.co.za](http://www.arclighting.co.za)