

BULK35: Arc Lux



SPECIFICATIONS

Luminaire Colour	Powder Coated Matt Black
Dimensions	Ø240mm x 55mm
Installation Type	Surface Mounted
Ingress Protection	IP44
Material	Aluminium & Perspex
Light Source	E27 Lampholder or LED SMD
Power Supply	220-240V AC 50-60Hz

PRODUCT CODES

BULK35.10	10W LED 4K 1063lm 120° CRI 80 A+
BULK35.15	15W LED 4K 1746lm 120° CRI 80 A+
BULK35.20	20W LED 4K 2328lm 120° CRI 80 A+
BULK35.30	30W LED 4K 3341lm 120° CRI 80 A+
BULK35.E27	E27 (LED E27)

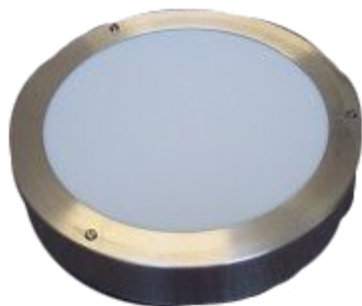


ARC Lighting CC

12 Goud Crescent, Brackenfell Industrial, Cape Town, 7560, South Africa
Tel: +27 (0)21 981 0539 | Fax: +27 (0)21 981 1092
sales@arclighting.co.za | www.arclighting.co.za



BULK36: Arc Lux



SPECIFICATIONS

Luminaire Colour	Sprayed Brushed Aluminium
Dimensions	Ø240mm x 55mm
Installation Type	Surface Mounted
Ingress Protection	IP44
Material	Aluminium & Perspex
Light Source	E27 Lampholder or LED SMD
Power Supply	220-240V AC 50-60Hz

PRODUCT CODES

BULK36

Ø240mm x 55mm



ARC Lighting CC

12 Goud Crescent, Brackenfell Industrial, Cape Town, 7560, South Africa

Tel: +27 (0)21 981 0539 | Fax: +27 (0)21 981 1092

sales@arclighting.co.za | www.arclighting.co.za



BULK03: Nautical



SPECIFICATIONS

Luminaire Colour Sprayed Brushed Aluminium
Dimensions Ø250mm x 55mm
Installation Type Surface Mounted
Ingress Protection IP44
Material Aluminium & Perspex
Light Source E27 Lampholder or LED SMD
Power Supply 220-240V AC | 50-60Hz

PRODUCT CODES

BULK03

Ø250mm x 55mm



ARC Lighting CC

12 Goud Crescent, Brackenfell Industrial, Cape Town, 7560, South Africa

Tel: +27 (0)21 981 0539 | Fax: +27 (0)21 981 1092

sales@arclighting.co.za | www.arclighting.co.za



BULK27: Nautical



SPECIFICATIONS

Luminaire Colour Powder Coated Matt White
Dimensions Ø290mm x 123mm
Installation Type Surface Mounted
Ingress Protection IP44
Material Aluminium & Perspex
Light Source E27 Lampholder or LED SMD
Power Supply 220-240V AC | 50-60Hz

PRODUCT CODES

BULK27

Ø290mm x 123mm



ARC Lighting CC

12 Goud Crescent, Brackenfell Industrial, Cape Town, 7560, South Africa

Tel: +27 (0)21 981 0539 | Fax: +27 (0)21 981 1092

sales@arclighting.co.za | www.arclighting.co.za



BULK31: Straight Nautical Bulkhead



SPECIFICATIONS

Luminaire Colour Brushed Aluminium
Dimensions 190mm (D) x 40mm (H)
Installation Type
Ingress Protection 44
Material Aluminium & Perspex
Light Source E14
Power Supply 220-240V 50-60Hz

PRODUCT CODES

BULK31

Matte White / Matte Black / Green / Brushed Aluminium / Brushed Brass / Bronze / Titanium Silver



ARC Lighting CC

12 Goud Crescent, Brackenfell Industrial, Cape Town, 7560, South Africa

Tel: +27 (0)21 981 0539 | Fax: +27 (0)21 981 1092

sales@arclighting.co.za | www.arclighting.co.za



BULK60: GoSquare



SPECIFICATIONS

Luminaire Colour Matt White
 Dimensions 250mm (L) x 250mm (W) x 60mm (H)
 Installation Type
 Ingress Protection 44
 Material Acrylic, Aluminium, Steel
 Light Source LED or E27
 Power Supply 230V 50Hz

PRODUCT CODES

BULK60.E27	E27 Lampholder
BULK60.10	10 Watt 4000K 1113 lm 111lm/W 120° 80 CRI A+ 230V
BULK60.15	15 Watt 3000K 1725 lm 115lm/W or 4000K 1820lm 122lm/W 120° 80 CRI A+ 230V
BULK60.20	20 Watt 4000K 2438 lm 122lm/W 120° 80 CRI A+ 230V
BULK60.30	30 Watt 4000K 3498 lm 117lm/W 120° 80 CRI A+ 230V



ARC Lighting CC

12 Goud Crescent, Brackenfell Industrial, Cape Town, 7560, South Africa
 Tel: +27 (0)21 981 0539 | Fax: +27 (0)21 981 1092
 sales@arclighting.co.za | www.arclighting.co.za