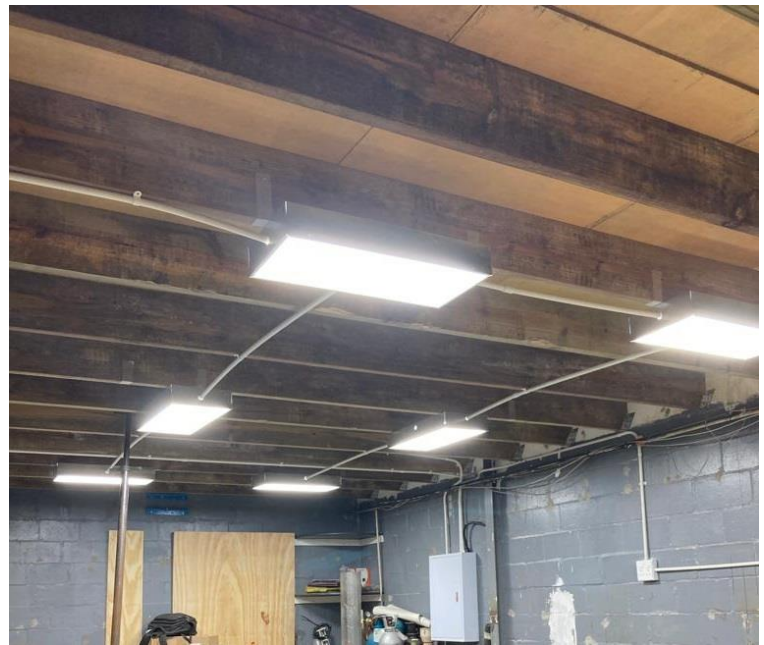


Titan +

Description: The ARC Titan + range is our next generation High-bay / Lobay replacement. Designed and engineering for ease of installation and available in 2 sizes depending on output required.

Standards: *SANS 60598-2-1

Specification: Total Weight: 4 Kg.
 Voltage / Current: 220-240VAC 50-60Hz.
 Lamp 1 of 3: SMD LED board with mains operated LED Driver.
 Lamp 2 of 3: SMD LED board with mains operated LED Driver.
 Lamp 3 of 3: SMD LED board with mains operated LED Driver.
 Operating Temp: Min 0°C / Max 45°C.
 IP Rating: IP20.
 Mild-Steel Housing and Gear Tray as Heat Sink (Passive Cooling)
 Easy Recess Installation
 Minimum Lumen Maintenance: 54 000h L80/B10

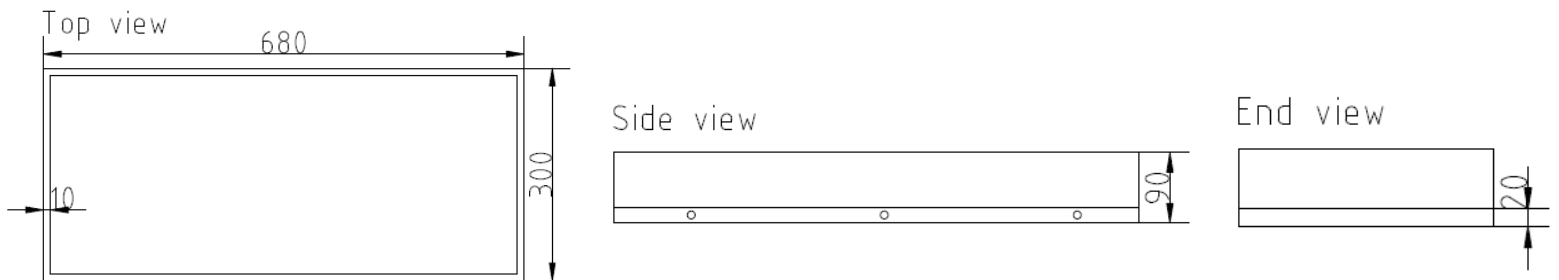


Finish Options: Add finish code from this table to end of the part code.

*Code	Finish
BA	Brushed Aluminium. Polished & lacquered.
BB	Brushed Brass. Polished & lacquered.
BC	Brushed Copper. Polished & lacquered.
K	Matte Black.

*Code	Finish
MW	Matte White.
TK	Textured Black.
TW	Textured White.
Z	Special finish: customer specification.

Input Power	LED Modules	Installation Type	Material	Beam Angle	Luminaire Colour	Kelvin (K)
220-240VAC 50-60Hz	CRI 80+	Suspended or Surface Mounting	Powder Coated Steel	120°	Matte White (MW)	3000K 4000K 5000K 6500
Product Code	Dimensions		CRI	K	Wattage (W)	Lumens (Lm)
TP.100W.5K.MW	ø680mm (L) x 300mm (W) x 95mm (H)		80+	5000K	101.7	16,740Lm*



ARC Lighting CC

12 Goud Crescent, Brackenfell Industrial, Cape Town, Western Cape, 7560 South Africa

Tel: 021 981 0539

Email: info@arclighting.co.za

Website: www.arclighting.co.za

ARC Lighting CC registered in South Africa No. 1994/011049/23

